

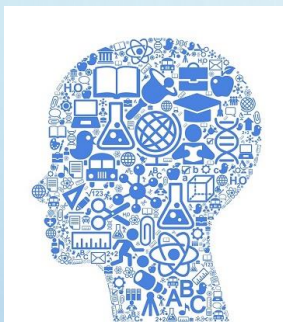
“I AM A HOYLE COURT SCIENTIST”



“I AM A SCIENTIST”

OUR HIGH-QUALITY SCIENCE EDUCATION PROVIDES ME THE FOUNDATIONS FOR UNDERSTANDING THE WORLD THROUGH THE SPECIFIC DISCIPLINES OF BIOLOGY, CHEMISTRY AND PHYSICS. SCIENCE HAS CHANGED OUR LIVES AND IS VITAL TO THE WORLD’S FUTURE PROSPERITY, AND ALL PUPILS SHOULD BE TAUGHT ESSENTIAL ASPECTS OF THE KNOWLEDGE, METHODS, PROCESSES AND USES OF SCIENCE.

I AM ENCOURAGED TO UNDERSTAND HOW SCIENCE CAN BE USED TO EXPLAIN WHAT IS OCCURRING, PREDICT HOW THINGS WILL BEHAVE, AND ANALYSE CAUSES

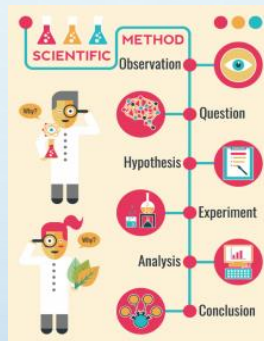


KNOWLEDGE

I CAN DESCRIBE ASSOCIATED PROCESSES AND KEY CHARACTERISTICS IN COMMON LANGUAGE, BUT ALSO BE FAMILIAR WITH, AND USE, TECHNICAL TERMINOLOGY ACCURATELY AND PRECISELY.

I CAN BUILD UP AN EXTENDED SPECIALIST VOCABULARY.

I CAN ALSO APPLY MY MATHEMATICAL KNOWLEDGE TO THEIR UNDERSTANDING OF SCIENCE, INCLUDING COLLECTING, PRESENTING AND ANALYSING DATA



METHODS

I CAN USE A VARIETY OF APPROACHES TO ANSWER RELEVANT SCIENTIFIC QUESTIONS. THESE TYPES OF SCIENTIFIC ENQUIRY INCLUDE: OBSERVING OVER TIME; PATTERN SEEKING; IDENTIFYING, CLASSIFYING AND GROUPING; COMPARATIVE AND FAIR TESTING (CONTROLLED INVESTIGATIONS); AND RESEARCHING USING SECONDARY SOURCES.

I CAN SEEK ANSWERS TO QUESTIONS THROUGH COLLECTING, ANALYSING AND PRESENTING DATA.



PROCESSES

I CAN USE SCIENCE PROCESS SKILLS CONSISTING OF OBSERVING (CALCULATING, MEASURING, CLASSIFYING, FINDING RELATIONSHIP OF SPACE/TIME), HYPOTHESIZING, PLANNING THE EXPERIMENT, CONTROLLING VARIABLES, INTERPRETING DATA, DRAWING CONCLUSIONS (INFERENCE), PREDICTING, APPLYING, AND COMMUNICATING

“I AM A RECEPTION CLASS SCIENTIST”

- ✓ I CAN NOTICE AND DESCRIBE DIFFERENT SOUNDS
- ✓ I KNOW THAT DIFFERENT OBJECTS MAKE DIFFERENT SOUNDS
- ✓ I CAN NOTICE AND DESCRIBE FACES
- ✓ I CAN NAME BODY PARTS
- ✓ I CAN DESCRIBE SIMILAR AND DIFFERENT
- ✓ I CAN NOTICE AND DESCRIBE DIFFERENT SMELLS AND TASTES
- ✓ I KNOW WE CHANGE AS WE GROW
- ✓ I CAN COMPARE
- ✓ I CAN DESCRIBE
- ✓ I CAN QUESTION



‘I AM A KEY STAGE 1 SCIENTIST’ WORKING SCIENTIFICALLY

I CAN WORK SCIENTIFICALLY BY:

ASKING SIMPLE QUESTIONS AND RECOGNISING THAT THEY CAN BE ANSWERED IN DIFFERENT WAYS

OBSERVING CLOSELY, USING SIMPLE EQUIPMENT

PERFORMING SIMPLE TESTS

IDENTIFYING AND CLASSIFYING

USING THEIR OBSERVATIONS AND IDEAS TO SUGGEST ANSWERS TO QUESTIONS

GATHERING AND RECORDING DATA TO HELP IN ANSWERING QUESTIONS



"I AM A YEAR 1 SCIENTIST"

PLANTS

I CAN IDENTIFY AND NAME A VARIETY OF COMMON WILD AND GARDEN PLANTS, INCLUDING DECIDUOUS AND EVERGREEN TREES

I CAN IDENTIFY AND DESCRIBE THE BASIC STRUCTURE OF A VARIETY OF COMMON FLOWERING PLANTS, INCLUDING TREES

ANIMALS INCLUDING HUMANS

I CAN IDENTIFY AND NAME A VARIETY OF COMMON ANIMALS INCLUDING FISH, AMPHIBIANS, REPTILES, BIRDS AND MAMMALS

I CAN IDENTIFY AND NAME A VARIETY OF COMMON ANIMALS THAT ARE CARNIVORES, HERBIVORES AND OMNIVORES

I CAN DESCRIBE AND COMPARE THE STRUCTURE OF A VARIETY OF COMMON ANIMALS

I CAN IDENTIFY, NAME, DRAW AND LABEL THE BASIC PARTS OF THE HUMAN BODY AND SAY WHICH PART OF THE BODY IS ASSOCIATED WITH EACH SENSE

SEASONAL CHANGES

I CAN OBSERVE CHANGES ACROSS THE 4 SEASONS

I CAN OBSERVE AND DESCRIBE WEATHER ASSOCIATED WITH THE SEASONS AND HOW DAY LENGTH VARIES.

EVERYDAY MATERIALS

I CAN DISTINGUISH BETWEEN AN OBJECT AND THE MATERIAL FROM WHICH IT IS MADE

I CAN IDENTIFY AND NAME A VARIETY OF EVERYDAY MATERIALS, INCLUDING WOOD, PLASTIC, GLASS, METAL, WATER, AND ROCK

I CAN DESCRIBE THE SIMPLE PHYSICAL PROPERTIES OF A VARIETY OF EVERYDAY MATERIALS

I CAN COMPARE AND GROUP TOGETHER A VARIETY OF EVERYDAY MATERIALS ON THE BASIS OF THEIR SIMPLE PHYSICAL PROPERTIES

"I AM A YEAR 2 SCIENTIST"

LIVING THINGS AND THEIR HABITATS

I CAN EXPLORE AND COMPARE THE DIFFERENCES BETWEEN THINGS THAT ARE LIVING, DEAD, AND THINGS THAT HAVE NEVER BEEN ALIVE

I CAN IDENTIFY THAT MOST LIVING THINGS LIVE IN HABITATS TO WHICH THEY ARE SUITED AND DESCRIBE HOW DIFFERENT HABITATS PROVIDE FOR THE BASIC NEEDS OF DIFFERENT KINDS OF ANIMALS AND PLANTS, AND HOW THEY DEPEND ON EACH OTHER

I CAN IDENTIFY AND NAME A VARIETY OF PLANTS AND ANIMALS IN THEIR HABITATS, INCLUDING MICROHABITATS

I CAN DESCRIBE HOW ANIMALS OBTAIN THEIR FOOD FROM PLANTS AND OTHER ANIMALS, USING THE IDEA OF A SIMPLE FOOD CHAIN, AND IDENTIFY AND NAME DIFFERENT SOURCES OF FOOD

PLANTS

I CAN OBSERVE AND DESCRIBE HOW SEEDS AND BULBS GROW INTO MATURE PLANTS

I CAN FIND OUT AND DESCRIBE HOW PLANTS NEED WATER, LIGHT AND A SUITABLE TEMPERATURE TO GROW AND STAY HEALTHY

ANIMALS INCLUDING HUMANS

I CAN NOTICE THAT ANIMALS, INCLUDING HUMANS, HAVE OFFSPRING WHICH GROW INTO ADULTS

I CAN FIND OUT ABOUT AND DESCRIBE THE BASIC NEEDS OF ANIMALS, INCLUDING HUMANS, FOR SURVIVAL (WATER, FOOD AND AIR)

I CAN DESCRIBE THE IMPORTANCE FOR HUMANS OF EXERCISE, EATING THE RIGHT AMOUNTS OF DIFFERENT TYPES OF FOOD, AND HYGIENE

USES OF EVERYDAY MATERIALS

I CAN IDENTIFY AND COMPARE THE SUITABILITY OF VARIETY OF EVERYDAY MATERIALS, INCLUDING WOOD, METAL, PLASTIC, GLASS, BRICK, ROCK, PAPER AND CARDBOARD FOR PARTICULAR USES

I CAN FIND OUT HOW THE SHAPES OF SOLID OBJECTS MADE FROM SOME MATERIALS CAN BE CHANGED BY SQUASHING, BENDING, TWISTING AND STRETCHING

'I AM A LOWER KEY STAGE 2 SCIENTIST' WORKING SCIENTIFICALLY

I CAN WORK SCIENTIFICALLY BY:

ASKING RELEVANT QUESTIONS AND USING DIFFERENT TYPES OF SCIENTIFIC ENQUIRIES TO ANSWER THEM

SETTING UP SIMPLE PRACTICAL ENQUIRIES, COMPARATIVE AND FAIR TESTS

MAKING SYSTEMATIC AND CAREFUL OBSERVATIONS AND, WHERE APPROPRIATE, TAKING - - ACCURATE MEASUREMENTS USING STANDARD UNITS, USING A RANGE OF EQUIPMENT, - INCLUDING THERMOMETERS AND DATA LOGGERS

GATHERING, RECORDING, CLASSIFYING AND PRESENTING DATA IN A VARIETY OF WAYS TO HELP IN ANSWERING QUESTIONS

RECORDING FINDINGS USING SIMPLE SCIENTIFIC LANGUAGE, DRAWINGS, LABELLED DIAGRAMS, KEYS, BAR CHARTS, AND TABLES

REPORTING ON FINDINGS FROM ENQUIRIES, INCLUDING ORAL AND WRITTEN EXPLANATIONS, DISPLAYS OR PRESENTATIONS OF RESULTS AND CONCLUSIONS

USING RESULTS TO DRAW SIMPLE CONCLUSIONS, MAKE PREDICTIONS FOR NEW VALUES, SUGGEST IMPROVEMENTS AND RAISE FURTHER QUESTIONS

IDENTIFYING DIFFERENCES, SIMILARITIES OR CHANGES RELATED TO SIMPLE SCIENTIFIC IDEAS AND PROCESSES

USING STRAIGHTFORWARD SCIENTIFIC EVIDENCE TO ANSWER QUESTIONS OR TO SUPPORT THEIR FINDINGS

"I AM A YEAR 3 SCIENTIST"

LIGHT

I CAN RECOGNISE THAT THEY NEED LIGHT IN ORDER TO SEE THINGS AND THAT DARK IS THE ABSENCE OF LIGHT

I CAN NOTICE THAT LIGHT IS REFLECTED FROM SURFACES

I CAN RECOGNISE THAT LIGHT FROM THE SUN CAN BE DANGEROUS AND THAT THERE ARE WAYS TO PROTECT THEIR EYES

I CAN RECOGNISE THAT SHADOWS ARE FORMED WHEN THE LIGHT FROM A LIGHT SOURCE IS BLOCKED BY AN OPAQUE OBJECT

I CAN FIND PATTERNS IN THE WAY THAT THE SIZE OF SHADOWS CHANGE

FORCES AND MAGNETS

I CAN COMPARE HOW THINGS MOVE ON DIFFERENT SURFACES.

I CAN NOTICE THAT SOME FORCES NEED CONTACT BETWEEN 2 OBJECTS BUT MAGNETIC FORCES CAN ACT AT A DISTANCE.

I CAN OBSERVE HOW MAGNETS ATTRACT OR REPEL EACH OTHER AND ATTRACT SOME MATERIALS AND NOT OTHERS

I CAN COMPARE AND GROUP TOGETHER A VARIETY OF EVERYDAY MATERIALS ON THE BASIS OF WHETHER THEY ARE MAGNETIC OR NOT

I CAN DESCRIBE MAGNETS AS HAVING 2 POLES.

I CAN PREDICT WHETHER 2 MAGENTS WILL ATTRACT OR REPEL EACH OTHER DEPENDING ON WHICH POLES ARE FACING

PLANTS

I CAN IDENTIFY AND DESCRIBE THE FUNCTIONS OF DIFFERENT PARTS OF FLOWERING PLANTS: ROOTS, STEM/TRUNK, LEAVES AND FLOWERS

I CAN EXPLORE THE REQUIREMENTS OF PLANTS FOR LIFE AND GROWTH (AIR, LIGHT, WATER, NUTRIENTS FROM SOIL, AND ROOM TO GROW) AND HOW THEY VARY FROM PLANT TO PLANT

I CAN INVESTIGATE THE WAY IN WHICH WATER IS TRANSPORTED WITHIN PLANTS

I CAN EXPLORE THE PART THAT FLOWERS PLAY IN THE LIFE CYCLE OF FLOWERING PLANTS, INCLUDING POLLINATION, SEED FORMATION AND SEED DISPERSAL

ANIMALS INCLUDING HUMANS

I CAN IDENTIFY THAT ANIMALS, INCLUDING HUMANS, NEED THE RIGHT TYPES AND AMOUNT OF NUTRITION, AND THAT THEY CANNOT MAKE THEIR OWN FOOD; THEY GET NUTRITION FROM WHAT THEY EAT

I CAN IDENTIFY THAT HUMANS AND SOME OTHER ANIMALS HAVE SKELETONS AND MUSCLES FOR SUPPORT, PROTECTION AND MOVEMENT

ROCKS

I CAN COMPARE AND GROUP TOGETHER DIFFERENT KINDS OF ROCKS ON THE BASIS OF THEIR APPEARANCE AND SIMPLE PHYSICAL PROPERTIES.

I CAN DESCRIBE IN SIMPLE TERMS HOW FOSSILS ARE FORMED WHEN THINS THAT HAVE LIVED ARE TRAPPED WITHIN ROCK

I CAN RECOGNISE THAT SOILS ARE MADE FROM ROCKS AND ORGANIC MATTER.

"I AM A YEAR 4 SCIENTIST"

ELECTRICITY

I CAN IDENTIFY COMMON APPLIANCES THAT RUN ON ELECTRICITY

I CAN CONSTRUCT A SIMPLE SERIES ELECTRICAL CIRCUIT, IDENTIFYING AND NAMING ITS BASIC PARTS, INCLUDING CELLS, WIRES, BULBS, SWITCHES AND BUZZERS

I CAN IDENTIFY WHETHER OR NOT A LAMP WILL LIGHT IN A SIMPLE SERIES CIRCUIT, BASED ON WHETHER OR NOT THE LAMP IS PART OF A COMPLETE LOOP WITH A BATTERY

I CAN RECOGNISE THAT A SWITCH OPENS AND CLOSSES A CIRCUIT AND ASSOCIATE THIS WITH WHETHER OR NOT A LAMP LIGHTS IN A SIMPLE SERIES CIRCUIT

I CAN RECOGNISE SOME COMMON CONDUCTORS AND INSULATORS, AND ASSOCIATE METALS WITH BEING GOOD CONDUCTORS

SOUND

I CAN IDENTIFY HOW SOUNDS ARE MADE ASSOCIATING SOME OF THEM WITH SOMETHING VIBRATING

I CAN RECOGNISE THAT VIBRATIONS FROM SOUNDS TRAVEL THROUGH A MEDIUM TO THE EAR

I CAN FIND PATTERNS BETWEEN THE PITCH OF A SOUND AND FEATURES OF THE OBJECT THAT PRODUCED IT

I CAN FIND PATTERNS BETWEEN THE VOLUME OF A SOUND AND THE STRENGTH OF THE VIBRATIONS THAT PRODUCED IT

I CAN RECOGNISE THAT SOUNDS GET FAINTER AS THE DISTANCE FROM THE SOUND SOURCE INCREASES

LIVING THINGS AND THEIR HABITATS

I CAN RECOGNISE THAT LIVING THINGS CAN BE GROUPED IN A VARIETY OF WAYS

I CAN EXPLORE AND USE CLASSIFICATION KEYS TO HELP GROUP, IDENTIFY AND NAME A VARIETY OF LIVING THINGS IN THEIR LOCAL AND WIDER ENVIRONMENT

I CAN RECOGNISE THAT ENVIRONMENTS CAN CHANGE AND THAT THIS CAN SOMETIMES POSE DANGERS TO LIVING THINGS

ANIMALS INCLUDING HUMANS

I CAN DESCRIBE THE SIMPLE FUNCTIONS OF THE BASIC PARTS OF THE DIGESTIVE SYSTEM IN HUMANS

I CAN IDENTIFY THE DIFFERENT TYPES OF TEETH IN HUMANS AND THEIR SIMPLE FUNCTIONS

I CAN CONSTRUCT AND INTERPRET A VARIETY OF FOOD CHAINS, IDENTIFYING PRODUCERS, PREDATORS AND PREY

STATES OF MATTER

I CAN COMPARE AND GROUP MATERIALS TOGETHER, ACCORDING TO WHETHER THEY ARE SOLIDS, LIQUIDS OR GASES

I CAN OBSERVE THAT SOME MATERIALS CHANGE STATE WHEN THEY ARE HEATED OR COOLED, AND MEASURE OR RESEARCH THE TEMPERATURE AT WHICH THIS HAPPENS IN DEGREES CELSIUS

I CAN IDENTIFY THE PART PLAYED BY EVAPORATION AND CONDENSATION IN THE WATER CYCLE AND ASSOCIATE THE RATE OF EVAPORATION WITH TEMPERATURE

'I AM AN UPPER KEY STAGE 2 SCIENTIST' WORKING SCIENTIFICALLY

I CAN WORK SCIENTIFICALLY BY:

PLANNING DIFFERENT TYPES OF SCIENTIFIC ENQUIRIES TO ANSWER QUESTIONS, INCLUDING RECOGNISING AND CONTROLLING VARIABLES WHERE NECESSARY

TAKING MEASUREMENTS, USING A RANGE OF SCIENTIFIC EQUIPMENT, WITH INCREASING ACCURACY AND PRECISION, TAKING REPEAT READINGS WHEN APPROPRIATE

RECORDING DATA AND RESULTS OF INCREASING COMPLEXITY USING SCIENTIFIC DIAGRAMS AND LABELS, CLASSIFICATION KEYS, TABLES, SCATTER GRAPHS, BAR AND LINE GRAPHS

USING TEST RESULTS TO MAKE PREDICTIONS TO SET UP FURTHER COMPARATIVE AND FAIR TESTS

REPORTING AND PRESENTING FINDINGS FROM ENQUIRIES, INCLUDING CONCLUSIONS, CAUSAL RELATIONSHIPS AND EXPLANATIONS OF AND A DEGREE OF TRUST IN RESULTS, IN ORAL AND WRITTEN FORMS SUCH AS DISPLAYS AND OTHER PRESENTATIONS

IDENTIFYING SCIENTIFIC EVIDENCE THAT HAS BEEN USED TO SUPPORT OR REFUTE IDEAS OR ARGUMENTS

"I AM A YEAR 5 SCIENTIST"

EARTH AND SPACE

I CAN DESCRIBE THE MOVEMENT OF THE EARTH AND OTHER PLANETS RELATIVE TO THE SUN IN THE SOLAR SYSTEM

I CAN DESCRIBE THE MOVEMENT OF THE MOON RELATIVE TO THE EARTH

I CAN DESCRIBE THE SUN, EARTH AND MOON AS APPROXIMATELY SPHERICAL BODIES

I CAN USE THE IDEA OF THE EARTH'S ROTATION TO EXPLAIN DAY AND NIGHT AND THE APPARENT MOVEMENT OF THE SUN ACROSS THE SKY

FORCES

I CAN EXPLAIN THAT UNSUPPORTED OBJECTS FALL TOWARDS THE EARTH BECAUSE OF THE FORCE OF GRAVITY

I CAN EXPLAIN THAT UNSUPPORTED OBJECTS FALL TOWARDS THE EARTH BECAUSE OF THE FORCE OF GRAVITY ACTING BETWEEN THE EARTH AND THE FALLING OBJECT

I CAN IDENTIFY THE EFFECTS OF AIR RESISTANCE, WATER RESISTANCE AND FRICTION THAT ACT BETWEEN MOVING SURFACES

I CAN RECOGNISE THAT SOME MECHANISMS INCLUDING LEVERS, PULLEYS AND GEARS ALLOW A SMALLER FORCE TO HAVE A GREATER EFFECT

LIVING THINGS AND THEIR HABITATS

I CAN DESCRIBE THE DIFFERENCES IN THE LIFE CYCLES OF A MAMMAL, AN AMPHIBIAN, AN INSECT AND A BIRD

I CAN DESCRIBE THE LIFE PROCESS OF REPRODUCTION IN SOME PLANTS AND ANIMALS

ANIMALS INCLUDING HUMANS

I DESCRIBE THE CHANGES AS HUMANS DEVELOP TO OLD AGE

PROPERTIES AND CHANGES OF MATERIALS

I CAN COMPARE AND GROUP TOGETHER EVERYDAY MATERIALS ON THE BASIS OF THEIR PROPERTIES,

I KNOW THAT SOME MATERIALS WILL DISSOLVE IN LIQUID TO FORM A SOLUTION AND CAN DESCRIBE HOW TO RECOVER A SUBSTANCE FROM A SOLUTION

I CAN USE KNOWLEDGE OF SOLIDS, LIQUIDS AND GASES TO DECIDE HOW MIXTURES MIGHT BE SEPARATED THROUGH FILTERING, SIEVING AND EVAPORATING

I CAN GIVE REASONS BASED ON EVIDENCE FROM COMPARATIVE AND FAIR TESTS FOR THE PARTICULAR USES OF EVERYDAY MATERIALS INCLUDING METALS, WOOD AND PLASTICS

I CAN DEMONSTRATE THAT DISSOLVING, MIXING AND CHANGES OF STATE ARE REVERSIBLE CHANGES

I CAN EXPLAIN THAT SOME CHANGES RESULT IN THE FORMATION OF NEW MATERIALS, AND THAT THIS KIND OF CHANGE IS NOT USUALLY REVERSIBLE, INCLUDING CHANGES ASSOCIATED WITH BURNING AND THE ACTION OF ACID ON BICARBONATE OF SODA

"I AM A YEAR 6 SCIENTIST"

LIGHT

I RECOGNISE THAT LIGHT APPEARS TO TRAVEL IN STRAIGHT LINES

I CAN USE THE IDEA THAT LIGHT TRAVELS IN STRAIGHT LINES TO EXPLAIN THAT OBJECTS ARE SEEN BECAUSE THEY GIVE OUT OR REFLECT LIGHT INTO THE EYE

I CAN EXPLAIN THAT WE SEE THINGS BECAUSE LIGHT TRAVELS FROM LIGHT SOURCES TO OUR EYES OR FROM LIGHT SOURCES TO OBJECTS AND THEN TO OUR EYES

I CAN USE THE IDEA THAT LIGHT TRAVELS IN STRAIGHT LINES TO EXPLAIN WHY SHADOWS HAVE THE SAME SHAPE AS THE OBJECTS THAT CAST THEM

ELECTRICITY

I CAN ASSOCIATE THE BRIGHTNESS OF A LAMP OR THE VOLUME OF A BUZZER WITH THE NUMBER OF VOLTAGE CELLS USED IN THE CIRCUIT

I CAN COMPARE AND GIVE REASONS FOR VARIATIONS IN HOW COMPONENTS FUNCTION, INCLUDING THE BRIGHTNESS OF BULBS, THE LOUDNESS OF BUZZERS AND THE ON/OFF POSITION OF SWITCHES

I CAN USE RECOGNISED SYMBOLS WHEN REPRESENTING A SIMPLE CIRCUIT IN A DIAGRAM

LIVING THINGS AND THEIR HABITATS

I DESCRIBE HOW LIVING THINGS ARE CLASSIFIED INTO BROAD GROUPS ACCORDING TO COMMON OBSERVABLE CHARACTERISTICS AND BASED ON SIMILARITIES AND DIFFERENCES, INCLUDING MICRO-ORGANISMS, PLANTS AND ANIMALS

I CAN GIVE REASONS FOR CLASSIFYING PLANTS AND ANIMALS BASED ON SPECIFIC CHARACTERISTICS

ANIMALS INCLUDING HUMANS

I CAN IDENTIFY AND NAME THE MAIN PARTS OF THE HUMAN CIRCULATORY SYSTEM, AND DESCRIBE THE FUNCTIONS OF THE HEART, BLOOD VESSELS AND BLOOD

I CAN RECOGNISE THE IMPACT OF DIET, EXERCISE, DRUGS AND LIFESTYLE ON THE WAY THEIR BODIES FUNCTION

I CAN DESCRIBE THE WAYS IN WHICH NUTRIENTS AND WATER ARE TRANSPORTED WITHIN ANIMALS, INCLUDING HUMANS

EVOLUTION AND INHERITANCE

I CAN RECOGNISE THAT LIVING THINGS HAVE CHANGED OVER TIME AND THAT FOSSILS PROVIDE INFORMATION ABOUT LIVING THINGS THAT INHABITED THE EARTH MILLIONS OF YEARS AGO

I CAN RECOGNISE THAT LIVING THINGS PRODUCE OFFSPRING OF THE SAME KIND, BUT NORMALLY OFFSPRING OF THE SAME KIND, BUT NORMALLY OFFSPRING VARY AND ARE NOT IDENTICAL TO THEIR PARENTS

I CAN IDENTIFY HOW ANIMALS AND PLANTS ARE ADAPTED TO SUIT THEIR ENVIRONMENT IN DIFFERENT WAYS AND THAT ADAPTATION MAY LEAD TO EVOLUTION